

Yuki no Hitohara

(Snowflakes)

Hitomi Kuroishi

Piano

mp

Measures 1-6 of the Piano part. The key signature has four flats (B-flat, E-flat, A-flat, D-flat) and the time signature is 3/4. The melody in the right hand starts with a whole rest, followed by a quarter note G4, a quarter note A4, and a quarter note B4. The left hand plays a steady eighth-note accompaniment starting from measure 2.

7

Pno.

Measures 7-12 of the Piano part. The right hand continues the melody with a half note B4 and a quarter note C5. The left hand accompaniment continues with eighth notes.

13

Pno.

Measures 13-18 of the Piano part. The right hand has whole rests in measures 13-15, then plays a half note B4 and a quarter note C5. The left hand accompaniment continues.

19

Pno.

Measures 19-24 of the Piano part. The right hand plays a half note B4, a half note C5, and a half note D5. The left hand accompaniment continues.

25

Pno.

Measures 25-30 of the Piano part. The right hand continues the melody with a half note B4 and a quarter note C5. The left hand accompaniment continues.

Pno.

Measures 31-36: The right hand features a melody with eighth and quarter notes, including rests. The left hand provides a bass line with eighth and quarter notes, often accompanied by a half note chord in the right hand.

Pno.

Measures 37-42: The right hand has a melody with quarter and half notes, including a half note chord in measure 40. The left hand continues with a bass line of eighth and quarter notes.

Pno.

Measures 43-48: The right hand melody includes quarter and eighth notes with some accidentals. The left hand bass line consists of eighth and quarter notes.

Pno.

Measures 49-54: The right hand melody features quarter and eighth notes. The left hand bass line is composed of eighth and quarter notes.

Pno.

Measures 55-60: The right hand melody includes quarter and eighth notes. The left hand bass line consists of eighth and quarter notes.

61

Yuki no Hitohara

Pno.

Measures 61-67: The right hand has whole rests. The left hand plays a descending eighth-note pattern: G4 (half), F#4 (quarter), E4 (half), D4 (half), C4 (half), B3 (half), A3 (half).

68

Pno.

Measures 68-74: The right hand has whole rests. The left hand plays a descending eighth-note pattern: G4 (half), F#4 (quarter), E4 (half), D4 (half), C4 (half), B3 (half), A3 (half).

75

Pno.

Measures 75-81: The right hand has whole rests. The left hand plays a descending eighth-note pattern: G4 (half), F#4 (quarter), E4 (half), D4 (half), C4 (half), B3 (half), A3 (half).

82

Pno.

Measures 82-87: The right hand has whole rests. The left hand plays a descending eighth-note pattern: G4 (half), F#4 (quarter), E4 (half), D4 (half), C4 (half), B3 (half), A3 (half).

88

Pno.

Measures 88-94: The right hand has whole rests. The left hand plays a descending eighth-note pattern: G4 (half), F#4 (quarter), E4 (half), D4 (half), C4 (half), B3 (half), A3 (half).

Pno.

Measures 94-99 of the piano score. The key signature is three flats (B-flat, E-flat, A-flat). The melody in the right hand features a series of eighth and quarter notes, with some rests. The bass line consists of a steady eighth-note accompaniment. Measure 99 ends with a half-note chord in the right hand.

100

Pno.

Measures 100-105 of the piano score. The melody continues with eighth and quarter notes. The bass line maintains the eighth-note accompaniment. Measure 105 ends with a half-note chord in the right hand.

106

Pno.

Measures 106-112 of the piano score. The melody features a half-note chord in measure 106, followed by quarter notes. The bass line continues with eighth notes. Measure 112 ends with a half-note chord in the right hand.

113

Pno.

Measures 113-119 of the piano score. The melody features a half-note chord in measure 113, followed by quarter notes. The bass line continues with eighth notes. Measure 119 ends with a half-note chord in the right hand.

120

Pno.

Measures 120-125 of the piano score. The melody features a half-note chord in measure 120, followed by quarter notes. The bass line continues with eighth notes. Measure 125 ends with a half-note chord in the right hand.

126

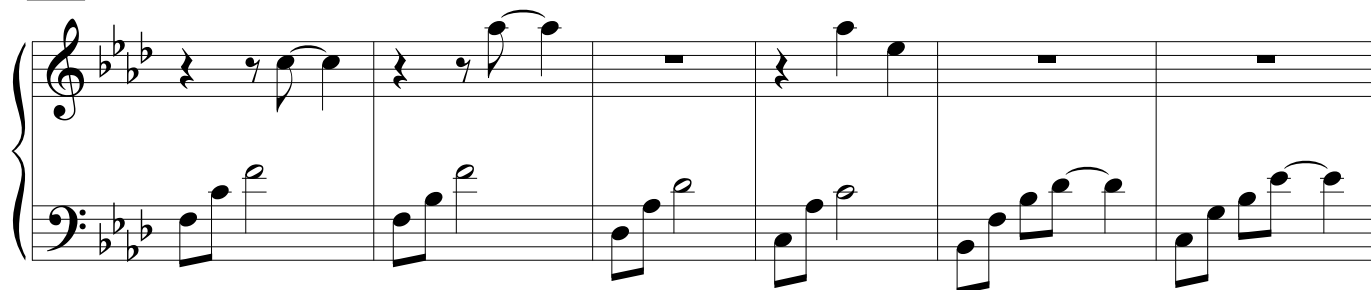
Yuki no Hitohara

Pno.



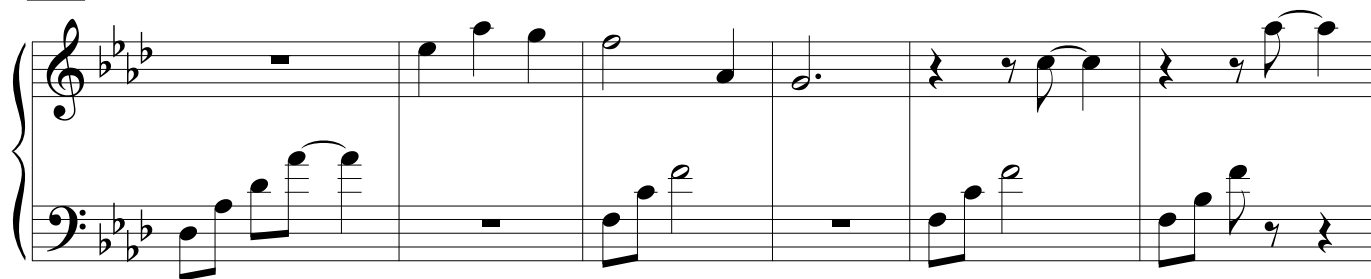
132

Pno.



138

Pno.



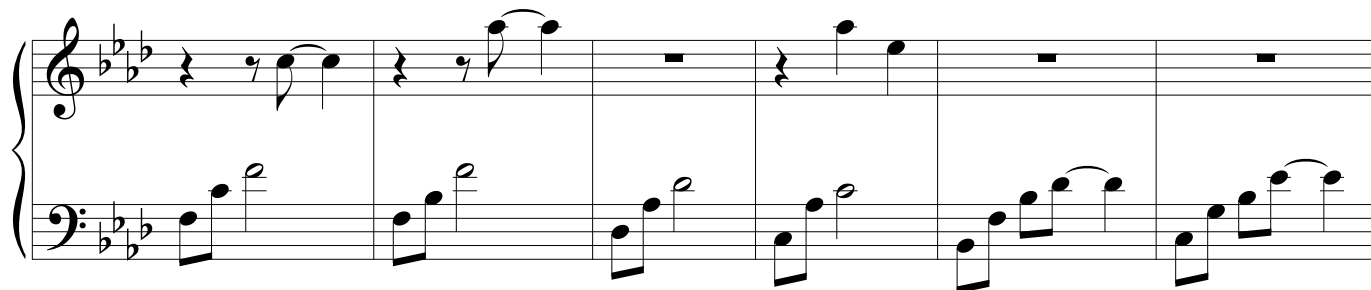
144

Pno.



150

Pno.



Yuki no Hitohara

Pno.

musical score for the piece "Yuki no Hitohara". The score is written for piano (Pno.) and consists of two staves: a treble staff and a bass staff. The key signature is three flats (B-flat, E-flat, A-flat), and the time signature is 7/8. The piece is marked with a tempo of "rit." (ritardando). The score is divided into six measures. The first measure contains a whole note in the treble staff and a half note in the bass staff. The second measure contains a whole note in the treble staff and a half note in the bass staff. The third measure contains a whole note in the treble staff and a half note in the bass staff. The fourth measure contains a whole note in the treble staff and a half note in the bass staff. The fifth measure contains a whole note in the treble staff and a half note in the bass staff. The sixth measure contains a whole note in the treble staff and a half note in the bass staff. The piece ends with a double bar line.